

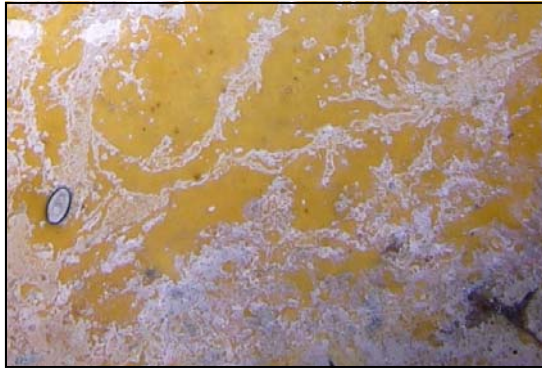
Report Stream Pollution

Report active or on-going spills and dumping to the Arlington County Emergency Communications Center at 703-558-2222.



Yellow/Brown

Greasy material that clumps together is likely to be grease or fuel oil.



Gray

Strong sewer odor, gray discolored water with solids indicate a possible sewage overflow.



White sudsy

Usually associated with washing activities; residential or commercial car washing, pressure washing, or other detergent discharge.



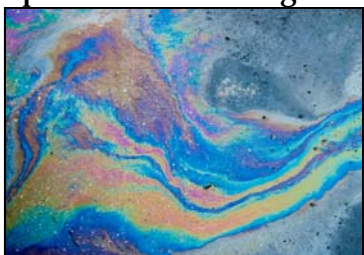
White cloudy/Milky

Without identifiable solids, suds or odor, it is likely run off from cement cutting, painting, caulking or grouting-related.



Rainbow Sheen

Can result from iron-oxidizing bacteria or oil discharges. To differentiate, trail a stick through the film. If film readily breaks into small clusters, it is likely bacteria. If it swirls together, it is most likely a petroleum discharge. Only report petroleum discharges.



Blue/Teal

When associated with a strong chemical/sewage odor and fecal solids, could indicate wastewater from portable toilets (port-a-johns).



Report Stream Pollution

Report active or on-going spills and dumping to the Arlington County Emergency Communications Center at 703-558-2222.

Red/Dark Brown

With strong petroleum or gas odor may be fuel oil.



Bright Fluorescent Green

Uranine dye is used by some public utilities to conduct dye tests of sewer systems.



Report Construction Site Runoff

Mud that is running off or being tracked off an active construction site should be reported to 703-228-3693. Note that this number is not monitored on a 24-hour basis. Leave a message. A follow up investigation will take place the next business day.



Naturally-caused Discolored Stream Water

Do not report the following instances of discolored streams.

Orange

This is a naturally occurring phenomenon associated with iron-oxidizing bacteria.



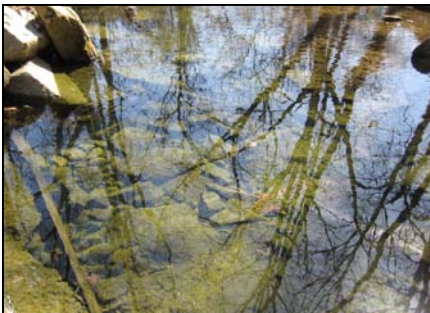
Yellow

Light yellow suds or film on stagnant water in spring or early summer due to pollen.



Green

Fibrous, hairy, slime layers with visible air bubbles may indicate an algae bloom.



Tea Color

Found in fall, usually the result of tannins released from fallen leaves.



Stream-related Resources

- Should my dog play in the stream?
<http://parks.arlingtonva.us/parksfacilities/dog-parks/dog-play-stream/>
- Stormwater & Watersheds: <http://environment.arlingtonva.us/stormwater-watersheds/>
- Stream monitoring program: <http://environment.arlingtonva.us/streams/stream-monitoring/>
- Stream safety: <http://environment.arlingtonva.us/streams/stream-safety/>